


Epson ColorWorks C3500 Color Label Printer & Supplies

An affordable and versatile color label printing solution for business.



 1-866-299-0066

 www.DuraFastLabel.ca

 sales@DuraFastLabel.ca



EPSON[®]
EXCEED YOUR VISION

EPSON COLORWORKS

EXCEED YOUR VISION

Features and Pricing



EPSON TM-C3500

NAME BADGE, WRIST BAND & COLOR LABEL PRINTER

PRICE: [\$ 2,499.00]
or \$52/month*

- Pigment Inkjet Label Printer with Built in Cutter
- 4 Individual ink cartridges (CMYK)
- Print Resolution up to 360 x 720 dpi
- Easily adjustable to handle 1.2" to 4.4" wide media
- Up to 4 inches per second print speed
- GHS BS5609 Certified

With Epson's ColorWorks C3500 inkjet label printer, you can dramatically reduce label costs, increase operational efficiencies and print high-quality, durable labels on demand in four colors (CMYK) at speeds of up to 4 inches per second.

SKU	Printer / Ink	CAD Price
C31CD54A9991	TM-C3500 Color Label Printer	\$ 2,499.00
C33S020581	Ink Cartridge - Cyan	\$ 26.00
C33S020583	Ink Cartridge - Yellow	\$ 26.00
C33S020582	Ink Cartridge - Magenta	\$ 26.00
S33S020577	Ink Cartridge - Black	\$ 26.00
C33S020580	Epson C3500 Maintenance Box	\$ 44.00
ECTMB-I	Spare in the Air Warranty - 3 Years Max	\$ 145.00
ECTME2-II	Spare in the Air Warranty - Year 4 or 5	\$ 455.00

*All monthly payments are based on a business lease for 60 month and subject to OAC.

Buy the Epson TM-C3500 from www.durafastlabel.ca and get
\$200 IN FREE LABELS

Discount CODE
C3500

01

1-866-299-0066

© 2018 Sector Nine Distribution Ltd. All Rights Reserved. The DuraFast Logo & DuraFast are registered trademarks of Sector Nine Distribution Ltd. All pricing is in Canadian Dollars

PEACE OF MIND COMES STANDARD

Epson Standard Depot Warranty

All Epson printers come with a one-year standard manufacturer's warranty. Many problems can be resolved over the phone. When this is not possible, defective printers can be dropped off or shipped to your nearest Epson depot for repair. Upon receipt of the printer, Epson will then perform the repairs and ship the printer back to you.

Epson Spare-in-the Air (SITA)

The upgraded Spare-in-the-Air warranty is an affordable choice when you cannot afford to have your label printer out of service for longer than 24 hours. This quick, overnight replacement program bridges the gap between the turnaround time of depot repair and the higher cost of onsite service.

Customers using label printers alongside manufacturing lines can't afford printer downtime. The Spare-in-the-Air warranty system brings assurance to industrial customers, such as bakeries producing baked goods each day, that label production can continue.

With Spare-in-the-Air, if the issue cannot be resolved over the phone, Epson will ship a replacement unit overnight to arrive the next day. From there, you'll return the damaged unit to Epson. It's that easy – and shipping both ways is covered by Epson.



BarTender by Seagull Scientific

BarTender by Seagull Scientific BarTender 2016 by Seagull Scientific offers label and barcode design and printing features such as label templates, label design wizards, included shapes and symbols, and barcoding and serialization capabilities. 30 Day Free Trial Available at DuraFastLabel.ca/bartender



SKU	Printer / Ink	CAD Price
BT16-BSC	Bartender - Basic	\$ 360.00
BT16-PRO	Bartender - Professional	\$ 695.00

NiceLabel Barcode Software

NiceLabel 2017 Designer Pro comes with templates, wizards, barcodes, and symbols as well as advanced designed features. Not only can you quickly create a compliant barcode or label, this label design software can be used to design RFID labels. 30 Day Free Trial Available at DuraFastLabel.ca/nicelabel

SKU	Printer / Ink	CAD Price
NLDEXX001S	NiceLabel - Basic	\$ 350.00
NLDPXX001S	NiceLabel - Professional	\$ 685.00

Roll to Roll System for Epson TM-C3500 printer

The rewinder and unwinder for Epson TM-C3500 printers are used to manage rolls of media up to 5" (127mm wide) having an outside diameter up to 10" (254mm). Units are equipped with adjustable core holder 1.57" (40mm) - 4.64" (118mm).

To guarantee an aligned media path in the system, the junction plate is used to connect the rewinder and unwinder together.

An external power supply 100/240VAC - 2.5A at 24V allows an electronic circuit to provide, through the tension arm, the adjustment of the rotation's speed and rotation's direction. A 2A fuse is used as protection.



SKUs	Printer / Ink	CAD Price
EPS35-JPL	Epson TM-C3500 Junction Plate for use with Unwinder & Rewinder	\$ 199.00
ASS1111-S0	Epson TM-C3500 Label Unwinder with 3" Core Holder	\$ 999.00
ASD1111-S0	Epson TM-C3500 Rewinder with 3" Core Holder	\$ 999.00
TM-C3500RKit	Epson TM-C3500 Label Rewinder, Unwinder & Junction Plate	\$ 1,899.00
UNWINDER-BG	Core holder for TM-C3500	\$ 67.95

Types of Labels

Label Orientation

Continuous Roll

When using continuous label rolls, you can use the cutter to cut the desired label length. So, if you use the 4 x 100 feet continuous roll, you can print 4x1, 4x2, 4x6, or 4x12 labels, as required for your business. The only difference between the die cut and the continuous roll labels is that they will have square corners.

Die Cut Rolls

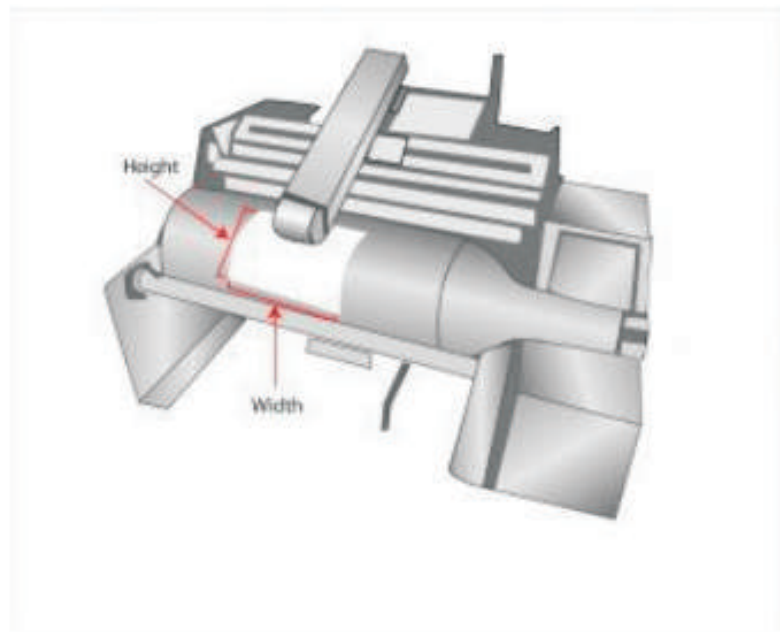
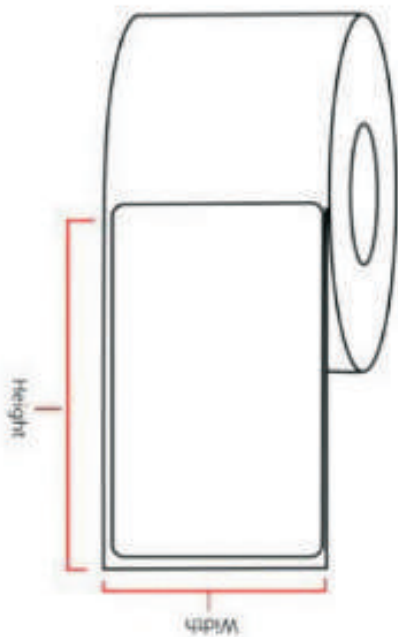
Die Cut usually means that the label is cut out with a cookie cutter to create the shape that you want the label to be. Die cut may mean your label or tag will have rounded corners as opposed to square corners (which are often called butt or kiss cut). One advantage of die cut is that, in most cases, the label is easier to apply. Our Die Cut labels are in a variety of different sizes for all your label needs – Circle, Ovals, Square and Rectangle.

Fan Fold Labels

Fan-fold labels make a neat concise stack and are easy to store, handle and ship. No special equipment is required to dispense the fan-fold labels into the printer.

UP Labels

UP Labels are also categorized by the number of labels across the width of the roll. 1 UP labels take up the full width of the roll. 2 UP labels are labels that cover half of the width of the roll, while 3 UP labels take UP a third of the roll and have three labels across the roll.



The width is the measurement spanning across the width of the label roll and the height is the measurement off the label on the roll as it winds around the label roll.

Tags and Wristbands...

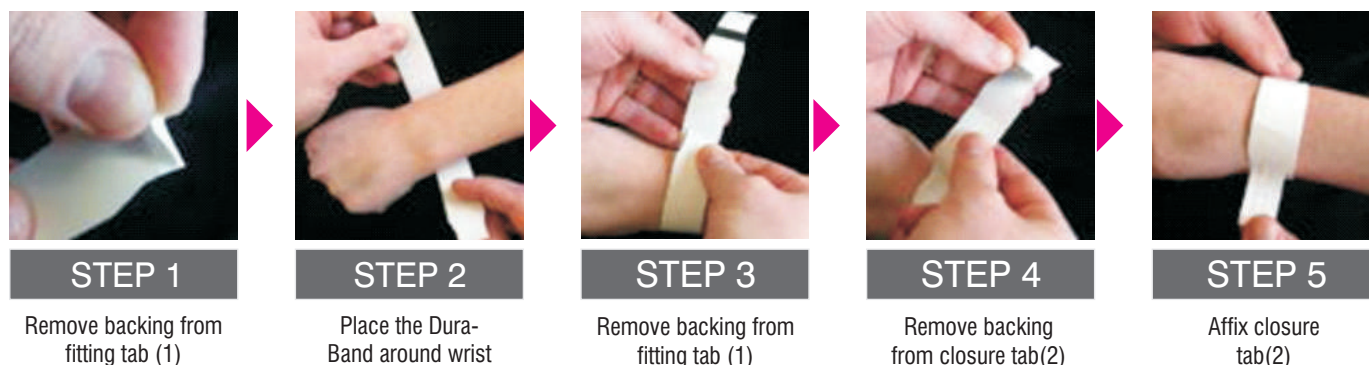
High Gloss Tags and Name Badges

High gloss tag stock is made from coated, heavy paper and does not have an adhesive backing. With their smooth, glossy surface and bright white finish, these high gloss tags are ideal for printing color event tickets, name badges, security badge, retail tags, shelf tags, marketing materials, cards, and other items requiring a tag or badge.

Epson Wristbands

Improve patient safety or event security with on-demand, fast-drying custom wristbands. DuraFast Label Company's blank wristbands can be personalized for virtually any purpose including identification, special events, beer and wine gardens, amusement parks, VIP access, spas and resorts, and more.

PROCESS



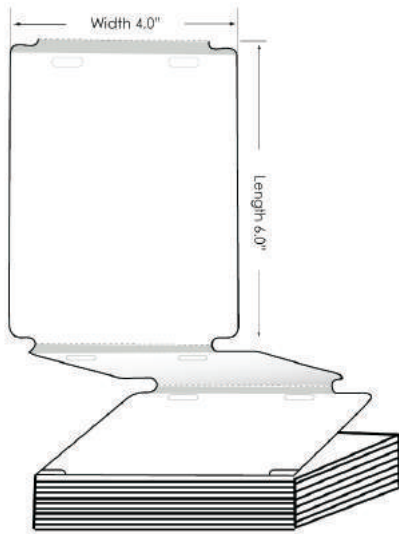
SKU#	SIZE	TYPE	ROLL COST
819011	1.25" X 11"	1.25x11 Wristband (L-WB-M3996) Single Roll - 125 Per Roll	Wristband \$ 63.43
819012	1.25" X 11"	1.25x11 Wristband (L-WB-M3996) 4 Rolls (125x4)	Wristband \$ 215.93

Matte Tags & Name Badges

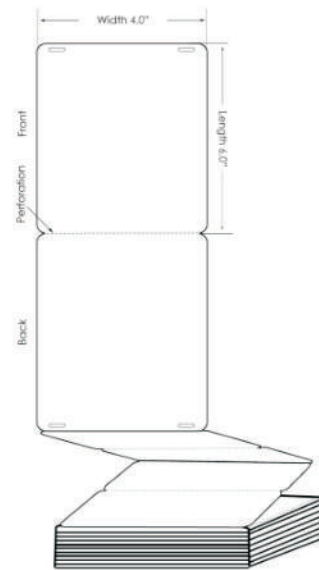
SKU#	SIZE	TYPE	ROLL COST
819005	2"	2" Continuous Tag	Matte \$ 40.43
819004	2.5"	2.5" Continuous Tag	Matte \$ 44.48
819003	3"	3" Continuous Tag	Matte \$ 49.88
819018	3.6"	3.6" Continuous Tag	Matte \$ 57.98
819002	4"	4" Continuous Tag	Matte \$ 57.98
815037	4.4"	4.4 " Continuous Chemical Tag (Synthetic Tag)	Chemical \$ 63.45
819001	4" x 3"	Matte Name Tags - 400 Per Roll	Matte \$ 57.98
819017	4" x 12'	4x12 Fan Fold Matte Name Tags w perf at 6"	Matte \$ 276.68
819019	4" x 6"	4"x6" Two-sided Matte , Fanfold, Round Corners , 4 holes	Matte \$ 272.63

Matte Tags and Name Badges

SKU 819016



SKU 819019



With a smooth surface and matte finish, matte tags are made from coated paper and do not have adhesive on the back. Our Epson matte tags are often used to print smudge-free name tags, security IDs, marketing materials, tabletop menus, inserts, retail tags, shelf tags, cards, and scorecards. The tag roll is made of Non-adhesive, perforated Matte inkjet printable tag stock for printing color-coded or photo ID badges for trade shows and meeting attendees and visitor badges.

High Gloss Tags & Name Badges

SKU#	SIZE	TYPE	ROLL COST	
818005	2"	2" Continuous Tag	High Gloss	\$ 51.23
818004	2.5"	2.5" Continuous Tag	High Gloss	\$ 57.98
818003	3"	3" Continuous Tag	High Gloss	\$ 63.38
818002	4"	4" Continuous Tag	High Gloss	\$ 82.28
818001	4" x 3"	High Gloss Name Tags - 400 Per Roll	High Gloss	\$ 82.28
819010	4" x 3"	4x3 Fan Fold HG special tag with 1 holes - 500 Tags Per Carton	High Gloss	\$ 126.83
819013	4" x 12"	4x12 Fan Fold HG Name Tags w perf at 6" - 500 Tags Per Carton	High Gloss	\$ 334.73
819014	4" x 6"	4x6 Fan Fold HG Name Tags w perf at 3" - 1000 Tags Per Roll	High Gloss	\$ 350.93
819015	4" x 6"	4x6 Fan Fold RFID HG Name Tags w perf at 3" - 1000 Tags Per Roll	High Gloss	\$ 944.93
819016	4" x 6"	4x6 Fan Fold HG Name Tags w 2 holes, rounded corners - 500 Tags Per Roll	High Gloss	\$ 215.93

DuraFast Recommends:

Labels Engineered for the Epson TM-C3500

DuraFast Label Company manufactures our own labels specifically for the Epson TM-C3500 label printer and its pigment inks. The labels listed here are optimized for this printer and available in a variety of sizes and shapes. Custom labels are also available.

Matte Paper Labels



Standard Continuous Label Roll

DuraFast[®] Matte Labels Epson TM-C3500 & TM-C3400

Matte labels are paper-based labels with a smooth, white matte surface. The general purpose, permanent adhesive adheres beautifully to cardboard, metals and most plastics. DuraFast matte paper labels are highly water and abrasion resistant.

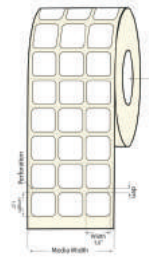
Matte labels are popular because of their versatility. They can be luxurious or natural looking depending on the design, use, and placement.

MATTE PAPER				1+	12+	24+	54+	108+
SKU#	SIZE	TYPE	LABELS PER ROLL	ROLLS	10%	15%	20%	20%
812001	2"	Continuous	-	\$18.83	\$ 16.95	\$ 16.01	\$ 15.07	\$ 14.12
812035	2.25	Continuous	-	\$18.83	\$ 16.95	\$ 16.01	\$ 15.07	\$ 14.12
812034	2.5"	Continuous	-	\$20.18	\$ 18.16	\$ 17.16	\$ 16.15	\$ 15.14
812002	3"	Continuous	-	\$21.53	\$ 19.38	\$ 18.30	\$ 17.23	\$ 16.15
812003	3.4	Continuous	-	\$21.53	\$ 19.38	\$ 18.30	\$ 17.23	\$ 16.15
812004	4"	Continuous	-	\$ 22.88	\$ 20.59	\$ 19.45	\$ 18.31	\$ 17.16
812005	4.2"	Continuous	-	\$ 24.23	\$ 21.81	\$ 20.60	\$ 19.39	\$ 18.17
812006	1x1"	Die-Cut (3 UP)	3200	\$ 29.63	\$ 26.67	\$ 25.19	\$ 23.71	\$ 22.22
812007	1.5" x 0.75"	Die-Cut (2 UP)	2750	\$ 29.63	\$ 26.67	\$ 25.19	\$ 23.71	\$ 22.22
812008	1.5" x 1"	Die-Cut (2 UP)	2150	\$ 30.98	\$ 27.88	\$ 26.34	\$ 24.79	\$ 23.24
812009	1.75" x 5"	Die-Cut	200	\$ 20.18	\$ 18.16	\$ 17.16	\$ 16.15	\$ 15.14
812010	2" x 1"	Die-Cut (2 UP)	2150	\$ 33.68	\$ 30.31	\$ 28.63	\$ 26.95	\$ 25.26
812028	2" x 1"	Die-Cut (1 UP)	1070	\$ 18.83	\$ 16.95	\$ 16.01	\$ 15.07	\$ 14.12
812011	2" x 1.5"	Die-Cut (2 UP)	1480	\$ 33.68	\$ 30.31	\$ 28.63	\$ 26.95	\$ 25.26
812012	2" x 2"	Die-Cut (2 UP)	1130	\$ 32.33	\$ 29.10	\$ 27.48	\$ 25.87	\$ 24.25
812024	2" x 6"	Die-Cut	190	\$ 18.83	\$ 16.95	\$ 16.01	\$ 15.07	\$ 14.12
812013	3" x 1"	Die-Cut	1070	\$ 21.53	\$ 19.38	\$ 18.30	\$ 17.23	\$ 16.15
812014	3" x 1.5"	Die-Cut	740	\$ 21.53	\$ 19.38	\$ 18.30	\$ 17.23	\$ 16.15
812015	3" x 2"	Die-Cut	565	\$ 21.53	\$ 19.38	\$ 18.30	\$ 17.23	\$ 16.15
812025	3" x 4" NP	Die-Cut	290	\$ 21.53	\$ 19.38	\$ 18.30	\$ 17.23	\$ 16.15
812016	3" x 5"	Die-Cut	230	\$ 21.53	\$ 19.38	\$ 18.30	\$ 17.23	\$ 16.15
812029	3" x 10"	Die-Cut	110	\$ 29.63	\$ 26.67	\$ 25.19	\$ 23.71	\$ 22.22
812017	4" x 1"	Die-Cut	1070	\$ 25.58	\$ 23.02	\$ 21.75	\$ 20.47	\$ 19.19
812018	4" x 1.5"	Die-Cut	730	\$ 32.33	\$ 29.10	\$ 27.48	\$ 25.87	\$ 24.25
812019	4" x 2"	Die-Cut	560	\$ 22.88	\$ 20.59	\$ 19.45	\$ 18.31	\$ 17.16
812020	4" x 3"	Die-Cut	380	\$ 22.88	\$ 20.59	\$ 19.45	\$ 18.31	\$ 17.16
812021	4" x 4"	Die-Cut	290	\$ 22.88	\$ 20.59	\$ 19.45	\$ 18.31	\$ 17.16
812026	4" x 8"	Die-Cut	140	\$ 24.23	\$ 21.81	\$ 20.60	\$ 19.39	\$ 18.17
812027	4" x 8" FF	Die-Cut	500	\$ 60.68	\$ 54.61	\$ 51.58	\$ 48.55	\$ 45.51
812022	4" x 6"	Die-Cut	190	\$ 22.88	\$ 20.59	\$ 19.45	\$ 15.07	\$ 17.16
812023	4" x 6.5"	Die-Cut	180	\$ 22.88	\$ 20.59	\$ 19.45	\$ 23.71	\$ 17.16
812030	2" Circle	Die-Cut (2 UP)	1000	\$ 36.38	\$ 32.74	\$ 30.93	\$ 29.11	\$ 27.29
812031	2.5" Circle	Die-Cut	450	\$ 26.93	\$ 24.24	\$ 22.89	\$ 21.55	\$ 20.20
812032	3" Circle	Die-Cut	380	\$ 35.03	\$ 31.53	\$ 29.78	\$ 28.03	\$ 26.27
812033	4" Circle	Die-Cut	260	\$ 32.33	\$ 29.10	\$ 27.48	\$ 25.87	\$ 24.25

*NP - Non-Perforated

*FF - Fan Fold in Carton

High Gloss Paper Labels



Standard 3UP Die-Cut Label Roll

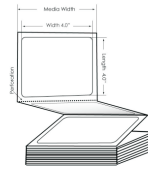
DuraFast[®] High Gloss Labels Epson TM-C3500 & TM-C3400

High gloss labels are paper-based labels with a smooth, shiny and bright white surface. The general purpose, permanent adhesive adheres beautifully to cardboard, metals and most plastics. DuraFast high gloss paper labels are highly water and abrasion resistant. They reflect light and help colors pop. Gloss labels are popular for their polished and professional appearance.

HIGH GLOSS				1+	12+	24+	54+	108+
SKU#	SIZE	TYPE	LABELS PER ROLL	ROLL COST	10%	15%	20%	25%
811033	1" with Vertical Slits	Continuous	-	\$ 32.33	\$ 29.10	\$ 27.48	\$ 25.87	\$ 25.87
811001	2"	Continuous	-	\$ 22.88	\$ 20.59	\$ 19.45	\$ 18.31	\$ 18.31
811040	2.32"	Continuous	-	\$ 24.23	\$ 21.81	\$ 20.60	\$ 19.39	\$ 19.39
811037	2.5"	Continuous	-	\$ 28.28	\$ 25.45	\$ 24.04	\$ 22.63	\$ 22.63
811038	2.75"	Continuous	-	\$ 28.28	\$ 25.45	\$ 24.04	\$ 22.63	\$ 22.63
811002	3"	Continuous	-	\$ 26.93	\$ 24.24	\$ 22.89	\$ 21.55	\$ 21.55
811003	3.4"	Continuous	-	\$ 28.28	\$ 25.45	\$ 24.04	\$ 22.63	\$ 22.63
811039	3.5"	Continuous	-	\$ 35.03	\$ 31.53	\$ 29.78	\$ 28.03	\$ 28.03
811004	4"	Continuous	-	\$ 30.98	\$ 27.88	\$ 26.34	\$ 24.79	\$ 24.79
811005	4.2"	Continuous	-	\$ 30.98	\$ 27.88	\$ 26.34	\$ 24.79	\$ 24.79
811006	1" x 1"	Die-Cut (3 UP)	3200	\$ 35.03	\$ 31.53	\$ 29.78	\$ 28.03	\$ 28.03
811036	1.18" x 2.5" (NP)	Die-Cut	1000	\$ 44.48	\$ 40.03	\$ 37.81	\$ 35.59	\$ 35.59
811007	1.5" x .75"	Die-Cut (2 UP)	2750	\$ 36.38	\$ 32.74	\$ 30.93	\$ 29.11	\$ 29.11
811008	1.5" x 1"	Die-Cut (2 UP)	2150	\$ 37.73	\$ 33.96	\$ 32.07	\$ 30.19	\$ 30.19
811009	1.75" x 5"	Die-Cut	200	\$ 22.88	\$ 20.59	\$ 19.45	\$ 18.31	\$ 18.31
811010	2" x 1"	Die-Cut (2 UP)	2150	\$ 40.43	\$ 36.39	\$ 34.37	\$ 32.35	\$ 32.35
811032	2" x 1"	Die-Cut	1070	\$ 22.88	\$ 20.59	\$ 19.45	\$ 18.31	\$ 18.31
811011	2" x 1.5"	Die-Cut (2 UP)	1480	\$ 40.43	\$ 36.39	\$ 34.37	\$ 32.35	\$ 32.35
811012	2" x 2"	Die-Cut (2 UP)	1130	\$ 40.43	\$ 36.39	\$ 34.37	\$ 32.35	\$ 32.35
811044	2" x 4"	Die-Cut	290	\$ 35.03	\$ 31.53	\$ 29.78	\$ 28.03	\$ 28.03
811024	2" x 6"	Die-Cut	190	\$ 22.88	\$ 20.59	\$ 19.45	\$ 18.31	\$ 18.31
811034	2.5" x 1.5"	Die-Cut	730	\$ 36.38	\$ 32.74	\$ 30.93	\$ 29.11	\$ 29.11
811013	3" x 1"	Die-Cut	1070	\$ 26.93	\$ 24.24	\$ 22.89	\$ 21.55	\$ 21.55
811014	3" x 1.5"	Die-Cut	740	\$ 29.63	\$ 26.67	\$ 25.19	\$ 23.71	\$ 23.71
811015	3" x 2"	Die-Cut	565	\$ 26.93	\$ 24.24	\$ 22.89	\$ 21.55	\$ 21.55
811026	3" x 4" (NP)	Die-Cut	290	\$ 26.93	\$ 24.24	\$ 22.89	\$ 21.55	\$ 21.55
811016	3" x 5"	Die-Cut	230	\$ 26.93	\$ 24.24	\$ 22.89	\$ 21.55	\$ 21.55
811025	3" x 10"	Die-Cut	110	\$ 36.38	\$ 32.74	\$ 30.93	\$ 29.11	\$ 29.11
811035	3.5" x 1.5"	Die-Cut	730	\$ 43.13	\$ 38.82	\$ 36.66	\$ 34.51	\$ 34.51
811017	4" x 1"	Die-Cut	1070	\$ 32.33	\$ 29.10	\$ 27.48	\$ 25.87	\$ 25.87
811018	4" x 1.5"	Die-Cut	730	\$ 39.08	\$ 35.17	\$ 33.22	\$ 31.27	\$ 31.27
811019	4" x 2"	Die-Cut	560	\$ 29.63	\$ 26.67	\$ 25.19	\$ 23.71	\$ 23.71
811020	4" x 3"	Die-Cut	380	\$ 29.63	\$ 26.67	\$ 25.19	\$ 23.71	\$ 23.71
811021	4" x 4"	Die-Cut	290	\$ 30.98	\$ 27.88	\$ 26.34	\$ 24.79	\$ 24.79
811022	4" x 6"	Die-Cut	190	\$ 29.63	\$ 26.67	\$ 25.19	\$ 23.71	\$ 23.71
811023	4" x 6.5"	Die-Cut	180	\$ 29.63	\$ 26.67	\$ 25.19	\$ 23.71	\$ 23.71
811027	4" x 8"	Die-Cut	140	\$ 29.63	\$ 26.67	\$ 25.19	\$ 23.71	\$ 23.71
811028	2" Circle	Die-Cut (2 UP)	1000	\$ 44.48	\$ 40.03	\$ 37.81	\$ 35.59	\$ 35.59
811029	2.5" Circle	Die-Cut	450	\$ 41.78	\$ 37.60	\$ 35.52	\$ 33.43	\$ 33.43
811030	3" Circle	Die-Cut	380	\$ 41.78	\$ 37.60	\$ 35.52	\$ 33.43	\$ 33.43
811031	4" Circle	Die-Cut	260	\$ 39.08	\$ 35.17	\$ 33.22	\$ 31.27	\$ 31.27

MATTE BOPP LABELS

4.0" x 4.0" Die-Cut Fan Folded



Standard 1UP Die-Cut Fan Fold Label

DuraFast[®] Matte BOPP Labels for Epson TM-C3500 & TM-C3400

Matte BOPP stands for Biaxially Oriented Polypropylene, a type of polypropylene film that has been stretched and extruded. The BOPP process results in a strong material that is easy to coat, print, and laminate. The matte polypropylene film (synthetic) labels offer water, grease, oil, flex-crack, and puncture resistance. In addition, these labels won't shrink or wrinkle with changes to the environment and they result in crisp, clear text and images. The Epson TM-C3500 makes it easy to label your products and the matte BOPP finish adds a premium touch to your label.

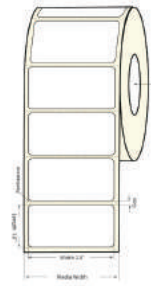
SKU#	SIZE	TYPE	LABELS PER ROLL	1+ Rolls	12+ 10%	24+ 15%	54+ 20%	108+ 25%
814001	2"	Continuous	-	\$ 32.33	\$ 29.10	\$ 27.48	\$ 25.87	\$ 24.25
814002	3"	Continuous	-	\$ 40.43	\$ 36.39	\$ 34.37	\$ 32.35	\$ 30.32
814003	3.4	Continuous	-	\$ 43.13	\$ 38.82	\$ 36.66	\$ 34.51	\$ 32.35
814004	4"	Continuous	-	\$ 48.53	\$ 43.68	\$ 41.25	\$ 38.83	\$ 36.40
814005	4.2"	Continuous	-	\$ 52.58	\$ 47.32	\$ 44.70	\$ 42.07	\$ 39.44
814006	1" x 1"	Die-Cut (3 UP)	3200	\$ 51.23	\$ 46.11	\$ 43.55	\$ 40.99	\$ 38.42
814036	1.25" x 0.75" NP	Die-Cut	1200	\$ 32.33	\$ 29.10	\$ 27.48	\$ 25.87	\$ 24.25
814007	1.5" x .75"	Die-Cut (2 UP)	2750	\$ 52.58	\$ 47.32	\$ 44.70	\$ 42.07	\$ 39.44
814008	1.5" x 1"	Die-Cut (2 UP)	2150	\$ 52.58	\$ 47.32	\$ 44.70	\$ 42.07	\$ 39.44
814009	1.75" x 5"	Die-Cut	200	\$ 30.98	\$ 27.88	\$ 26.34	\$ 24.79	\$ 23.24
814010	2" x 1"	Die-Cut (2 UP)	2150	\$ 59.33	\$ 53.40	\$ 50.43	\$ 47.47	\$ 44.50
814011	2" x 1.5"	Die-Cut (2 UP)	1480	\$ 59.33	\$ 53.40	\$ 50.43	\$ 47.47	\$ 44.50
814012	2" x 2"	Die-Cut (2 UP)	1130	\$ 59.33	\$ 53.40	\$ 50.43	\$ 47.47	\$ 44.50
814013	3" x 1"	Die-Cut	1070	\$ 39.08	\$ 35.17	\$ 33.22	\$ 31.27	\$ 29.31
814014	3" x 1.5"	Die-Cut	740	\$ 40.43	\$ 36.39	\$ 34.37	\$ 32.35	\$ 30.32
814015	3" x 2"	Die-Cut	565	\$ 39.08	\$ 35.17	\$ 33.22	\$ 31.27	\$ 29.31
814016	3" x 5"	Die-Cut	230	\$ 36.38	\$ 32.74	\$ 30.93	\$ 29.11	\$ 27.29
814038	3.5" x 1.125" (5 mm gap, 3.625" media width)	Die-Cut	850	\$ 56.63	\$ 50.97	\$ 48.14	\$ 45.31	\$ 42.47
814017	4" x 1"	Die-Cut	1070	\$ 49.88	\$ 44.89	\$ 42.40	\$ 39.91	\$ 37.41
814018	4" x 1.5"	Die-Cut	730	\$ 59.33	\$ 53.40	\$ 50.43	\$ 47.47	\$ 44.50
814019	4" x 2"	Die-Cut	560	\$ 47.18	\$ 42.46	\$ 40.11	\$ 37.75	\$ 35.39
814020	4" x 3"	Die-Cut	380	\$ 47.18	\$ 42.46	\$ 40.11	\$ 37.75	\$ 35.39
814021	4" x 4"	Die-Cut	290	\$ 47.18	\$ 42.46	\$ 40.11	\$ 37.75	\$ 35.39
814037	4" x 4" FF	"Die-Cut(Removable Adhesive)"	2000	\$ 399.53	\$ 359.58	\$ 339.60	\$ 319.63	\$ 299.65
814022	4" x 6"	Die-Cut	190	\$ 47.18	\$ 42.46	\$ 40.11	\$ 37.75	\$ 35.39
814023	4" x 6.5"	Die-Cut	180	\$ 47.18	\$ 42.46	\$ 40.11	\$ 37.75	\$ 35.39
814027	2" Circle	Die-Cut (2 UP)	1000	\$ 71.48	\$ 64.33	\$ 60.76	\$ 57.19	\$ 53.61
814028	2.5" Circle	Die-Cut	450	\$ 75.53	\$ 67.98	\$ 64.20	\$ 60.43	\$ 56.65
814029	3" Circle	Die-Cut	380	\$ 75.53	\$ 67.98	\$ 64.20	\$ 60.43	\$ 56.65
814030	4" Circle	Die-Cut	260	\$ 63.38	\$ 57.04	\$ 53.88	\$ 50.71	\$ 47.54

*NP - Non-Perforated

*FF - Fan Fold



CHEMICAL LABELS



Standard 1UP Die-Cut Label Roll

DuraFast[®] Chemical Labels for Epson TM-C3500 & TM-C3400

Businesses need to meet the GHSBS5609 certification to ensure that any chemical or drum labels are able to last in unforgiving environments, particularly those that are submerged underwater for extended periods of time. DuraFast chemical labels have been GHSBS5609-certified by Smithers Pira when printed with Epson color label printers. Under GHSBS5609 certification, labels must be able to withstand a three-month saltwater submersion.

SKU#	SIZE	TYPE	LABELS PER ROLL	1+ Rolls	12+ 10%	24+ 15%	54+ 20%	108+ 25%
815001	2"	Continuous	-	\$ 26.93	\$ 24.24	\$ 22.89	\$ 21.55	\$ 20.20
815002	3"	Continuous	-	\$ 32.33	\$ 29.10	\$ 27.48	\$ 25.87	\$ 24.25
815003	3.4"	Continuous	-	\$ 33.68	\$ 30.31	\$ 28.63	\$ 26.95	\$ 25.26
815004	4"	Continuous	-	\$ 40.43	\$ 36.39	\$ 34.37	\$ 32.35	\$ 30.32
815005	4.2"	Continuous	-	\$ 37.73	\$ 33.96	\$ 32.07	\$ 30.19	\$ 28.30
815006	1" x 1"	Die-Cut (3 UP)	2880	\$ 43.13	\$ 38.82	\$ 36.66	\$ 34.51	\$ 32.35
815007	1.5" x .75"	Die-Cut (2 UP)	2460	\$ 40.43	\$ 36.39	\$ 34.37	\$ 32.35	\$ 30.32
815008	1.5" x 1"	Die-Cut (2 UP)	1920	\$ 40.43	\$ 36.39	\$ 34.37	\$ 32.35	\$ 30.32
815039	1.75" x 0.625"	Die-Cut	1400	\$ 25.58	\$ 23.02	\$ 21.75	\$ 20.47	\$ 19.19
815009	1.75" x 5" NP	Die-Cut	200	\$ 28.28	\$ 25.45	\$ 24.04	\$ 22.63	\$ 21.21
815010	2" x 1"	Die-Cut (2 UP)	1920	\$ 45.83	\$ 41.25	\$ 38.96	\$ 36.67	\$ 34.37
815011	2" x 1.5"	Die-Cut (2 UP)	1320	\$ 45.83	\$ 41.25	\$ 38.96	\$ 36.67	\$ 34.37
815012	2" x 2"	Die-Cut (2 UP)	1000	\$ 45.83	\$ 41.25	\$ 38.96	\$ 36.67	\$ 34.37
815024	2" x 6"	Die-Cut	175	\$ 26.93	\$ 24.24	\$ 22.89	\$ 21.55	\$ 20.20
815043	2.25" x 1.75" NP	Die-Cut	550	\$ 35.03	\$ 31.53	\$ 29.78	\$ 28.03	\$ 26.27
815041	2.5"x1.25" NP	Die-Cut	650	\$ 36.38	\$ 32.74	\$ 30.93	\$ 29.11	\$ 27.29
815042	2.5" x 1.5" NP	Die-Cut	750	\$ 36.38	\$ 32.74	\$ 30.93	\$ 29.11	\$ 27.29
815013	3" x 1"	Die-Cut	950	\$ 30.98	\$ 27.88	\$ 26.34	\$ 24.79	\$ 23.24
815014	3" x 1.5"	Die-Cut	660	\$ 33.68	\$ 30.31	\$ 28.63	\$ 26.95	\$ 25.26
815015	3" x 2" NP	Die-Cut	500	\$ 30.98	\$ 27.88	\$ 26.34	\$ 24.79	\$ 23.24
815016	3" x 5"	Die-Cut	200	\$ 29.63	\$ 26.67	\$ 25.19	\$ 23.71	\$ 22.22
815044	3.5" x 2.5" NP	Die-Cut	400	\$ 41.78	\$ 37.60	\$ 35.52	\$ 33.43	\$ 31.34
815017	4" x 1"	Die-Cut	950	\$ 41.78	\$ 37.60	\$ 35.52	\$ 33.43	\$ 31.34
815018	4" x 1.5"	Die-Cut	650	\$ 43.13	\$ 38.82	\$ 36.66	\$ 34.51	\$ 32.35
815019	4" x 2"	Die-Cut	500	\$ 39.08	\$ 35.17	\$ 33.22	\$ 31.27	\$ 29.31
815020	4" x 3" NP	Die-Cut	340	\$ 35.03	\$ 31.53	\$ 29.78	\$ 28.03	\$ 26.27
815025	4" x 3"	Die-Cut	340	\$ 35.03	\$ 31.53	\$ 29.78	\$ 28.03	\$ 26.27
815021	4" x 4"	Die-Cut	260	\$ 37.73	\$ 33.96	\$ 32.07	\$ 30.19	\$ 28.30
815022	4" x 6"	Die-Cut	175	\$ 35.03	\$ 31.53	\$ 29.78	\$ 28.03	\$ 26.27
815023	4" x 6.5"	Die-Cut	160	\$ 39.08	\$ 35.17	\$ 33.22	\$ 31.27	\$ 29.31
815026	4" x 8" NP	Die-Cut	130	\$ 39.08	\$ 35.17	\$ 33.22	\$ 31.27	\$ 29.31
815040	4" x 11" NP	Die-Cut	95	\$ 39.08	\$ 35.17	\$ 33.22	\$ 31.27	\$ 29.31
815038	4" x 12" NP	Die-Cut	80	\$ 35.03	\$ 31.53	\$ 29.78	\$ 28.03	\$ 26.27
815029	2" Circle	Die-Cut	500	\$ 30.98	\$ 27.88	\$ 26.34	\$ 24.79	\$ 23.24
815030	2.5" Circle	Die-Cut	400	\$ 33.68	\$ 30.31	\$ 28.63	\$ 26.95	\$ 25.26
815031	3" Circle	Die-Cut	340	\$ 35.03	\$ 31.53	\$ 29.78	\$ 28.03	\$ 26.27
815032	4" Circle	Die-Cut	250	\$ 51.23	\$ 46.11	\$ 43.55	\$ 40.99	\$ 38.42

*NP - Non-Perforated

WHY BUY FROM DURAFast[®] LABEL COMPANY?

WE ARE LABEL PRINTING EXPERTS!

Free label cost analysis

Find out just how affordable label production is with the Epson TM-C3500

Free labels with printer purchase or customer review

An exclusive value offered only by DuraFast Label Company

Free live, online 30-minute training on how to use your printer

Get set up and printing fast
Become familiar with your new printer

Large selection of media and printing supplies available

One-stop shop for color label printing solutions

Free 30-day premium support

Get your questions answered
Resolve any problems

Custom label solutions for any specific usage

We can make custom labels to your specifications

10% OFF Your next Order
on DuraFastLabel.ca

Use Code: 10TMC3500


Promotion valid only on DuraFast TM-C3500 Labels. Offer excludes printers, finishing systems, warranties, label applicators and dispensers. Not valid for gift certificates. Promo code expires December, 31st 2019. Twelve uses per customer.



DuraFast Label Company

Div. of Sector Nine Distribution Ltd.

 2-53 Queen's Plate Drive Toronto ON M9W 6P1

 1-866-299-0066

 sales@DuraFastLabel.ca

 1-416-981-3071

 www.DuraFastLabel.ca